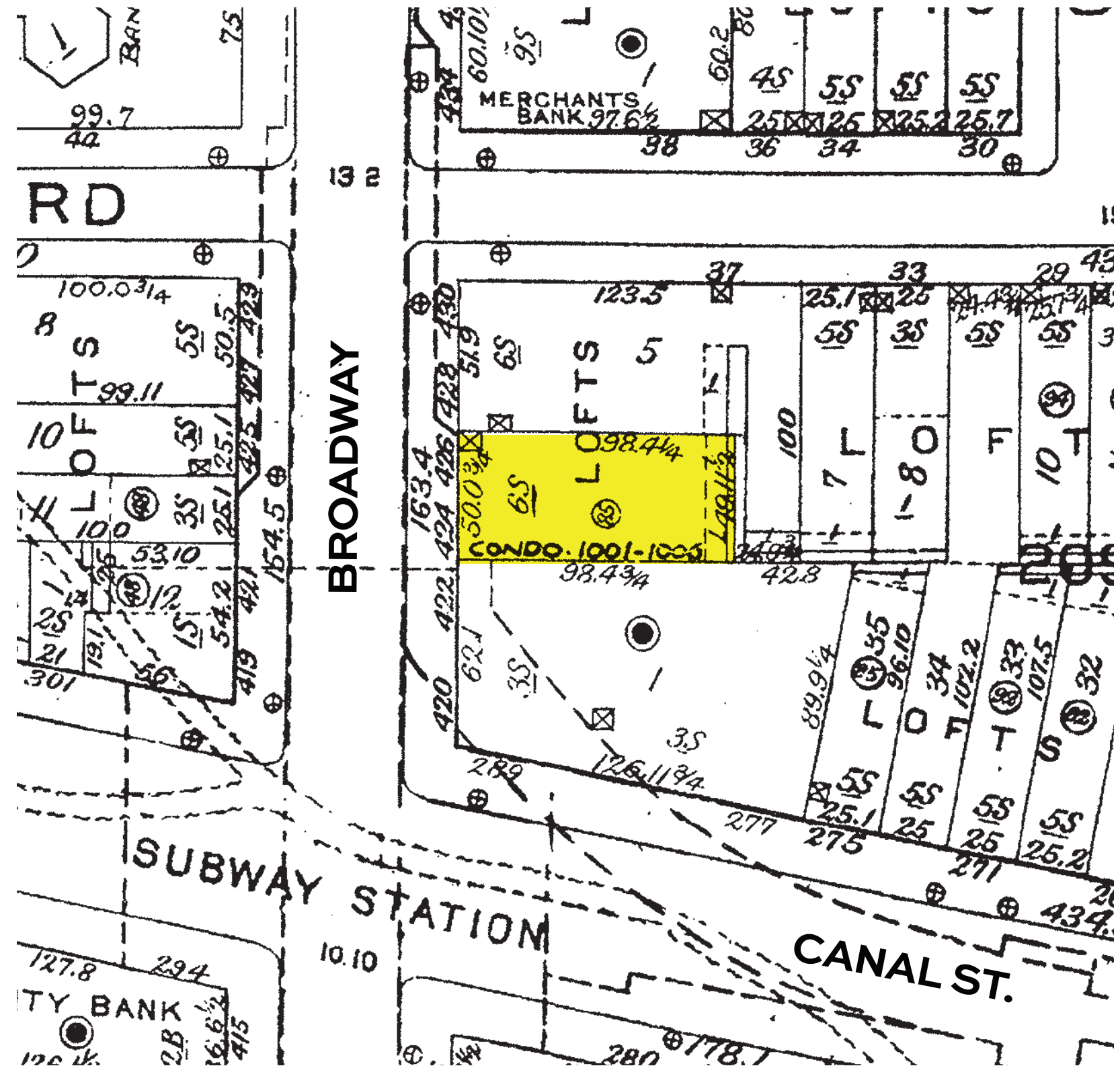


--- SOHO CAST IRON DISTRICT AUGUST 14 1973. ——— SOHO CAST IRON DISTRICT EXTENSION LP-2362 MAY 11 2010.

SITE LOCATION DIAGRAM



SANBORN MAP

SITE LOCATION: 424 BROADWAY

424 BROADWAY STOREFRONT - SOHO CAST IRON DISTRICT EXTENSION LP-2362





EXISTING CONDITION

EXISTING CONDITION

424 BROADWAY STOREFRONT

BKSK



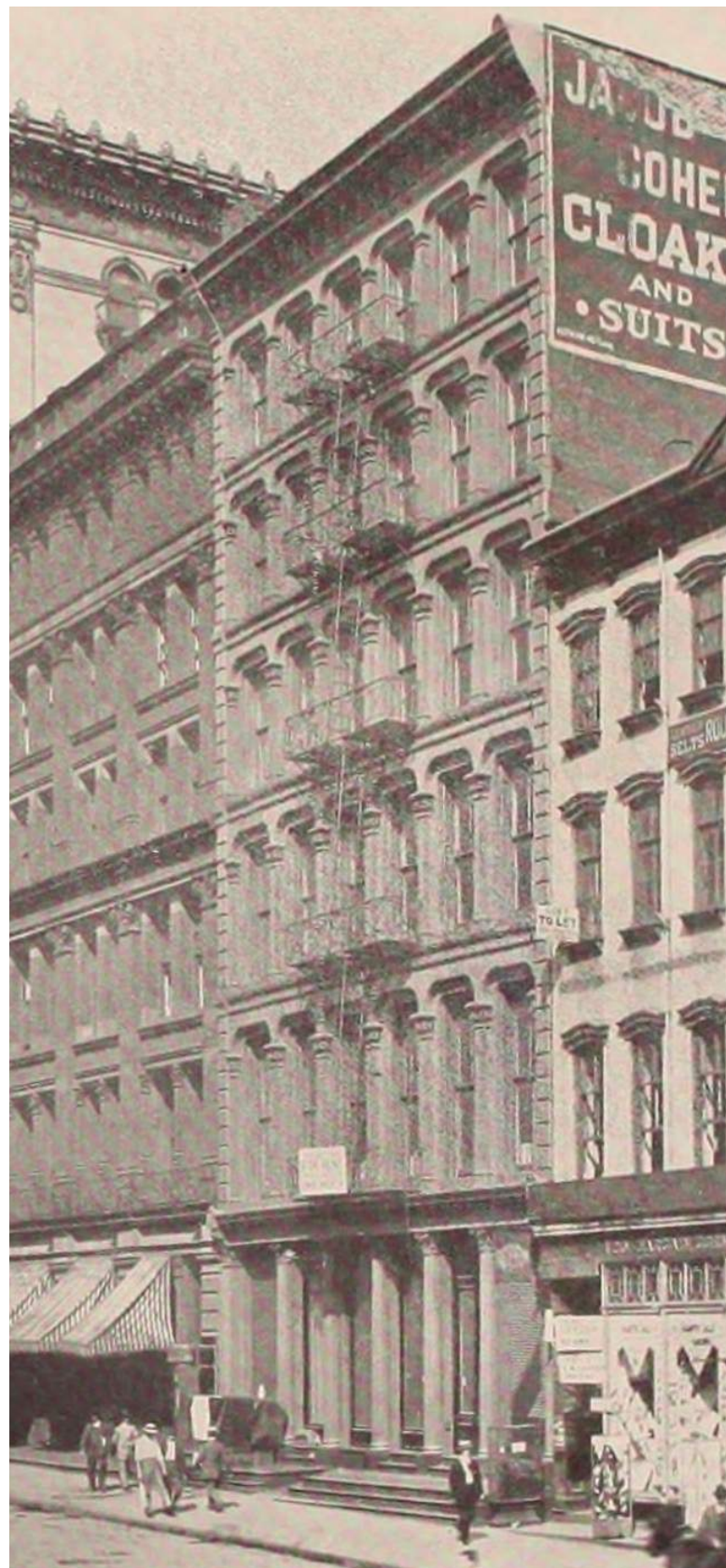
EXISTING CONDITION

HISTORIC BUILDING 1868
OMG STOREFRONT 2012

EXISTING CONDITION

424 BROADWAY STOREFRONT

BKSK



DELEEUWS BOTH SIDES OF BROADWAY - 1910



DELEEUWS BOTH SIDES OF BROADWAY - 1910 - DETAIL

424-426 Broadway
Borough of Manhattan Tax Map Block 209, Lots 1001-1006

Date of construction: c.1868
Architect: Henry Engelbert
Original Owner: Elias S. Higgins
Type: Store & lofts
Style: Italianate
Stories: 6
Structure/Material: Marble and cast iron

FROM LPC DESIGNATION REPORT



DETAIL FROM ARTHUR HOSKING - BROADWAY SERIES - 1920

HISTORIC PHOTOGRAPHS

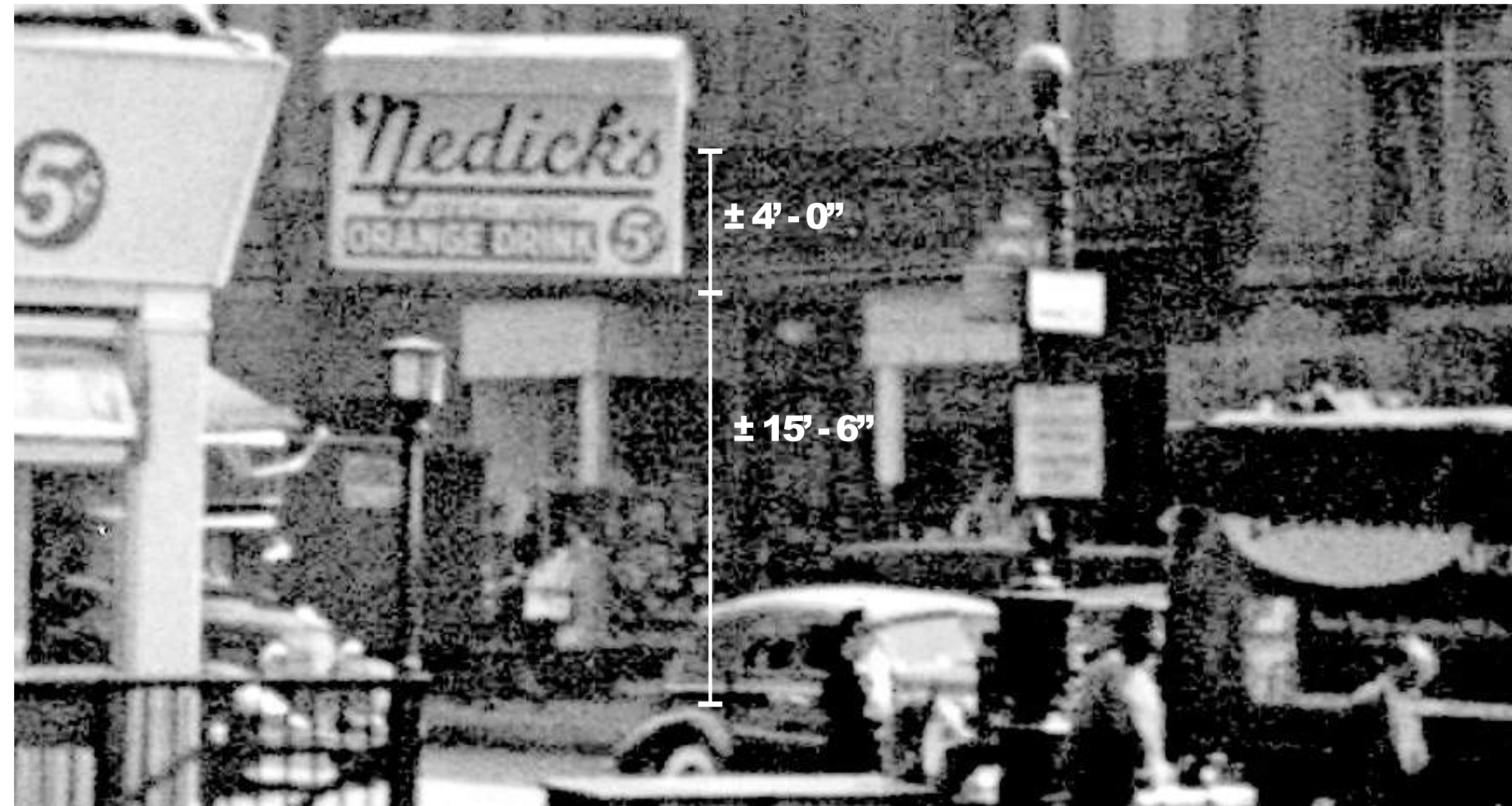
424 BROADWAY STOREFRONT



NYC TAX PHOTO - 1940s

intact. Over the years, the building was occupied by a variety of commercial interests, including Louis Mason & Co., fancy goods (1871); Jacob Cohen, cloaks (1907), whose sign is evident in a c.1910 photograph of the building; **F.W. Woolworth (1921)**; Louis Waldman, sportswear (1938); the Joseph Meyer Company, stationers and printers (1951), whose neon sign remains attached to

FROM LPC DESIGNATION REPORT



NYC TAX PHOTO - 1940s - DETAIL

HISTORIC PHOTOGRAPHS

424 BROADWAY STOREFRONT



BROADWAY AND 35TH



5TH AVE & 40TH ST - DETAIL



5TH AVE & 40TH ST



22 E 14TH ST

TYPICAL WOOLWORTH SIGNAGE CIRCA 1920'S

424 BROADWAY STOREFRONT

BKSK



NYC TAX PHOTO - 1940



NYC TAX PHOTO - 1940 - DETAIL

TYPICAL WOOLWORTH SIGNAGE

424 BROADWAY STOREFRONT



HISTORIC ELEVATION (PRE 1920'S)



HISTORIC ELEVATION (±1921 - 1940)

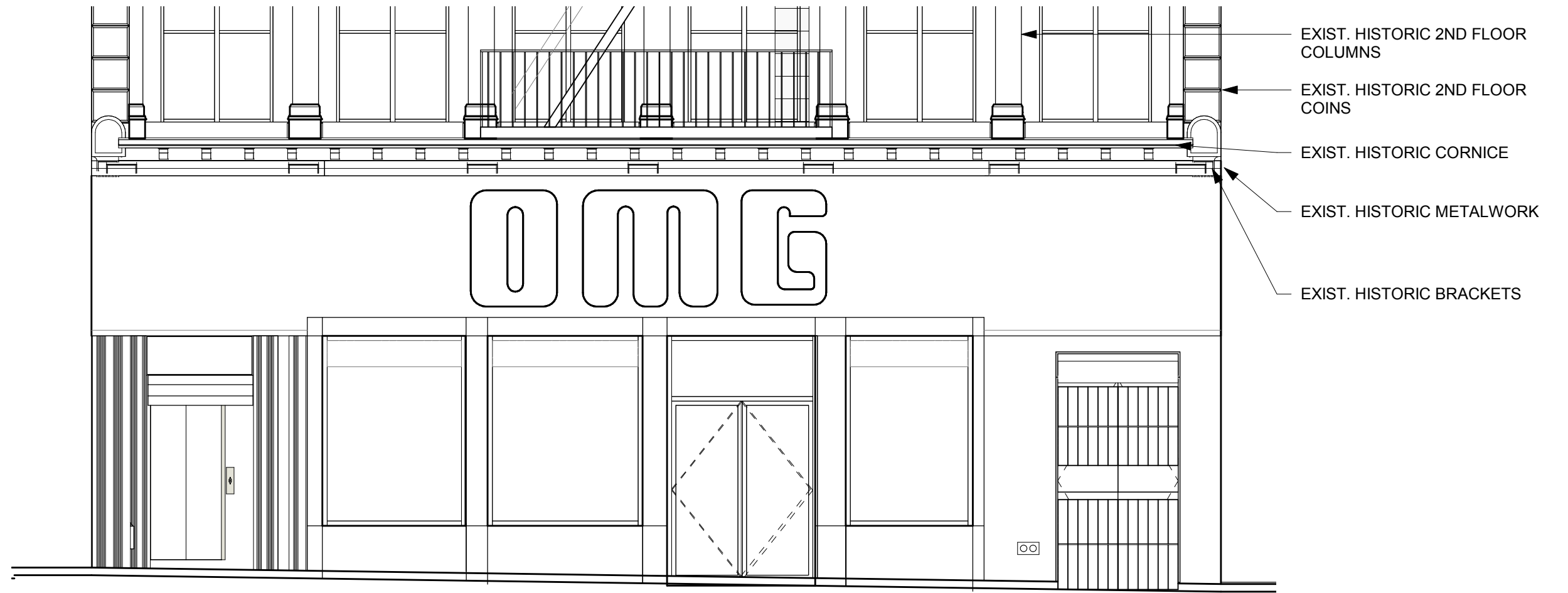


SCALE: 1/8" = 1'-0"

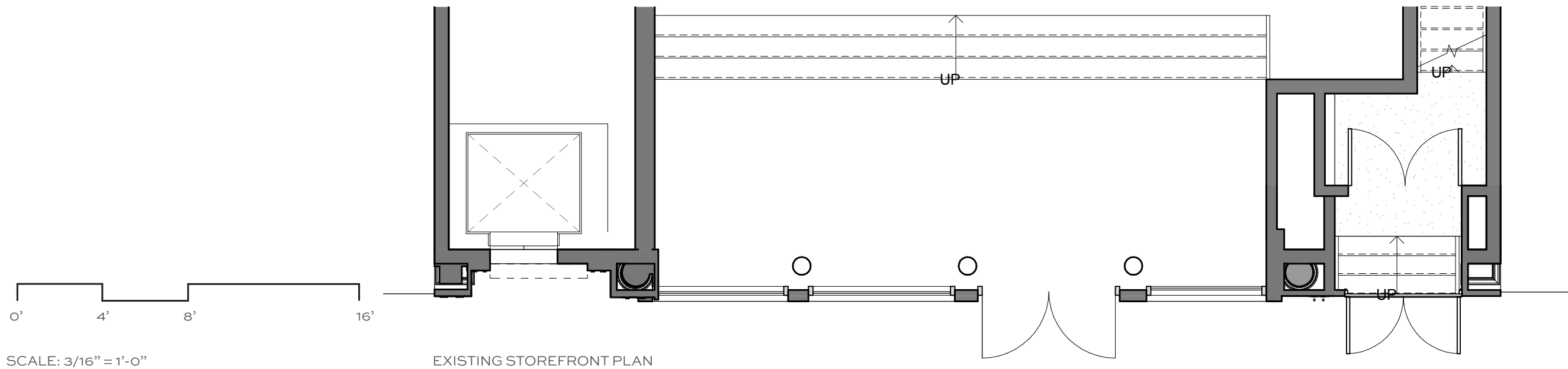
HISTORIC ELEVATIONS

424 BROADWAY STOREFRONT

BKSK



EXISTING STOREFRONT ELEVATION



EXISTING STOREFRONT PLAN

CURRENT CONDITION
424 BROADWAY STOREFRONT

BKSK



PROBE 1 - EXTERNAL

PROBE 2 - EXTERNAL

PROBE 3 - EXTERNAL

PROBE 6 - EXTERNAL

PROBE 5 - INTERNAL

PROBE 4 - EXTERNAL

⊙ = APPROXIMATE LOCATION OF PROBE TO BE CONDUCTED

PROBE LOCATIONS OVERVIEW

STOREFRONT PROBES

424 BROADWAY STOREFRONT

BKSK

11.15.18

NORTHERNMOST PILASTER BASE



PROBE 6

SOUTHERNMOST COLUMN BASE



PROBE 4

SOUTHERNMOST COLUMN CAPITAL



PROBE 2 - LOOKING AT LOCATION 1

SOUTHERNMOST PILASTER CAPITAL



PROBE 2

SOUTHERNMOST PILASTER BASE



PROBE 3

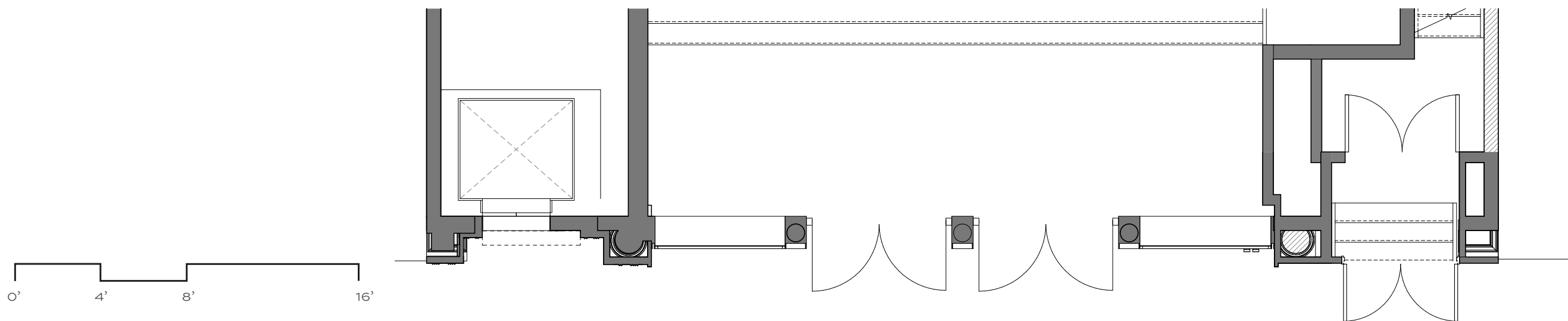
STOREFRONT PROBES

424 BROADWAY STOREFRONT

BKSK



PHASE 1 ELEVATION



0' 4' 8' 16'

SCALE: 3/16" = 1'-0"

PHASE 1 PLAN

PROPOSED STOREFRONT - PHASE 1

424 BROADWAY STOREFRONT

BKSK

11.15.18



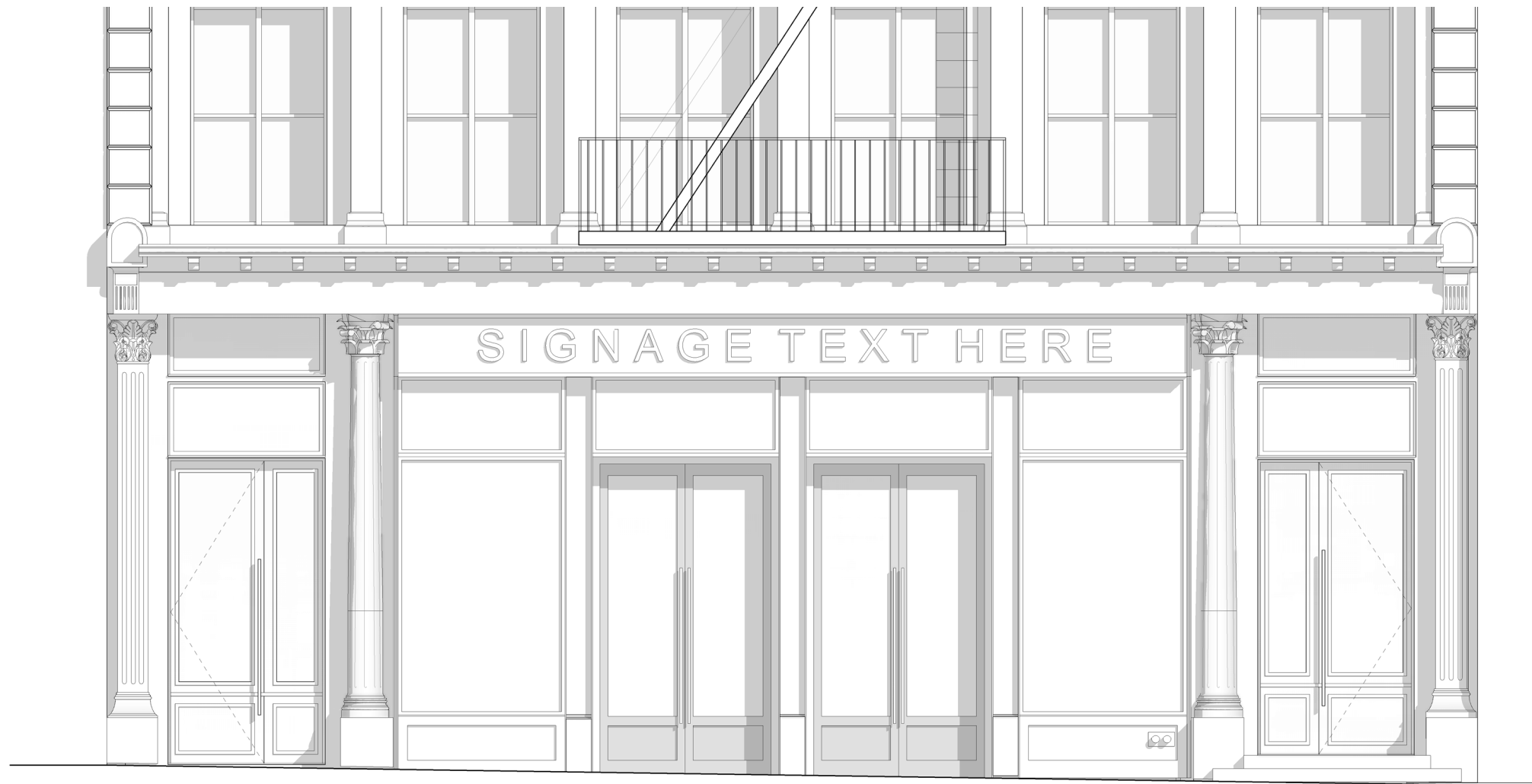
PHASE 1 - 3D VIEWS

PROPOSED STOREFRONT - PHASE 1

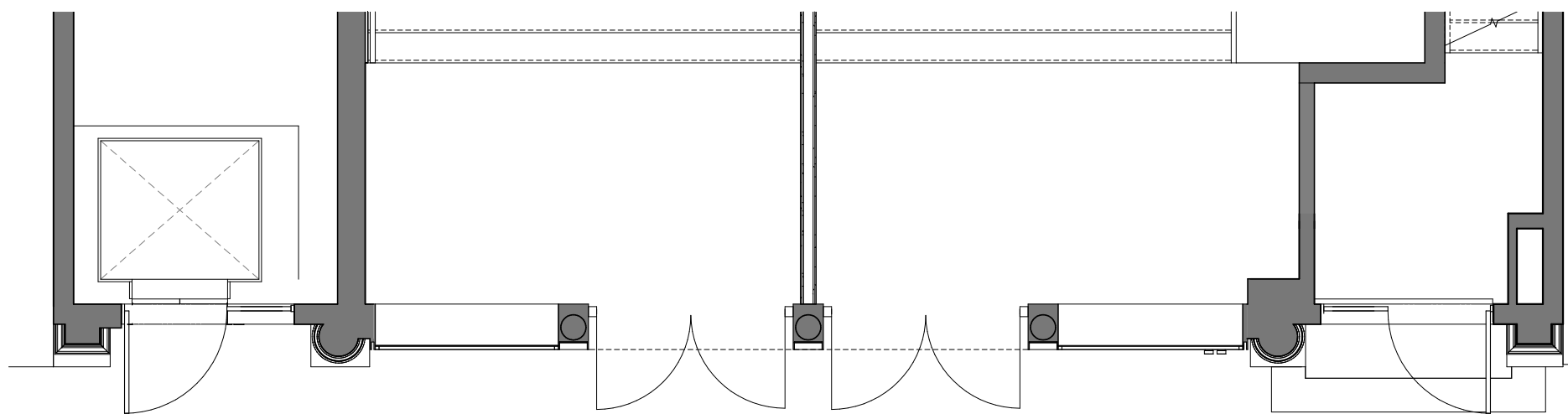
424 BROADWAY STOREFRONT

BKSK

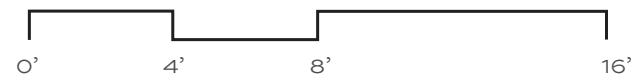
11.15.18



COMPLETED MASTER-PLAN ELEVATION



COMPLETED MASTER-PLAN PLAN



SCALE = 3/16" = 1'-0"

PROPOSED STOREFRONT POTENTIAL MASTER-PLAN

424 BROADWAY STOREFRONT

BKSK

11.15.18



PROPOSED MASTER-PLAN VIEWS

PROPOSED STOREFRONT POTENTIAL MASTER-PLAN

424 BROADWAY STOREFRONT

BKSK

11.15.18

PT - 1: METAL FINS, WINDOW FRAMES, HISTORIC COLUMNS

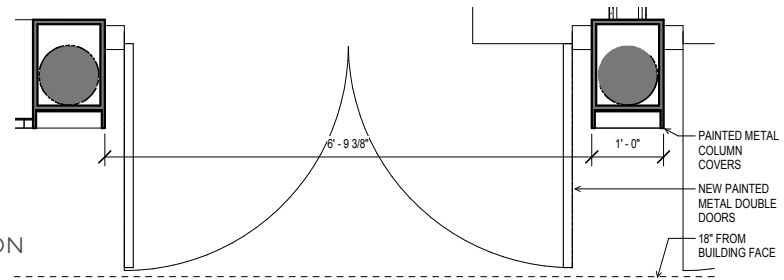
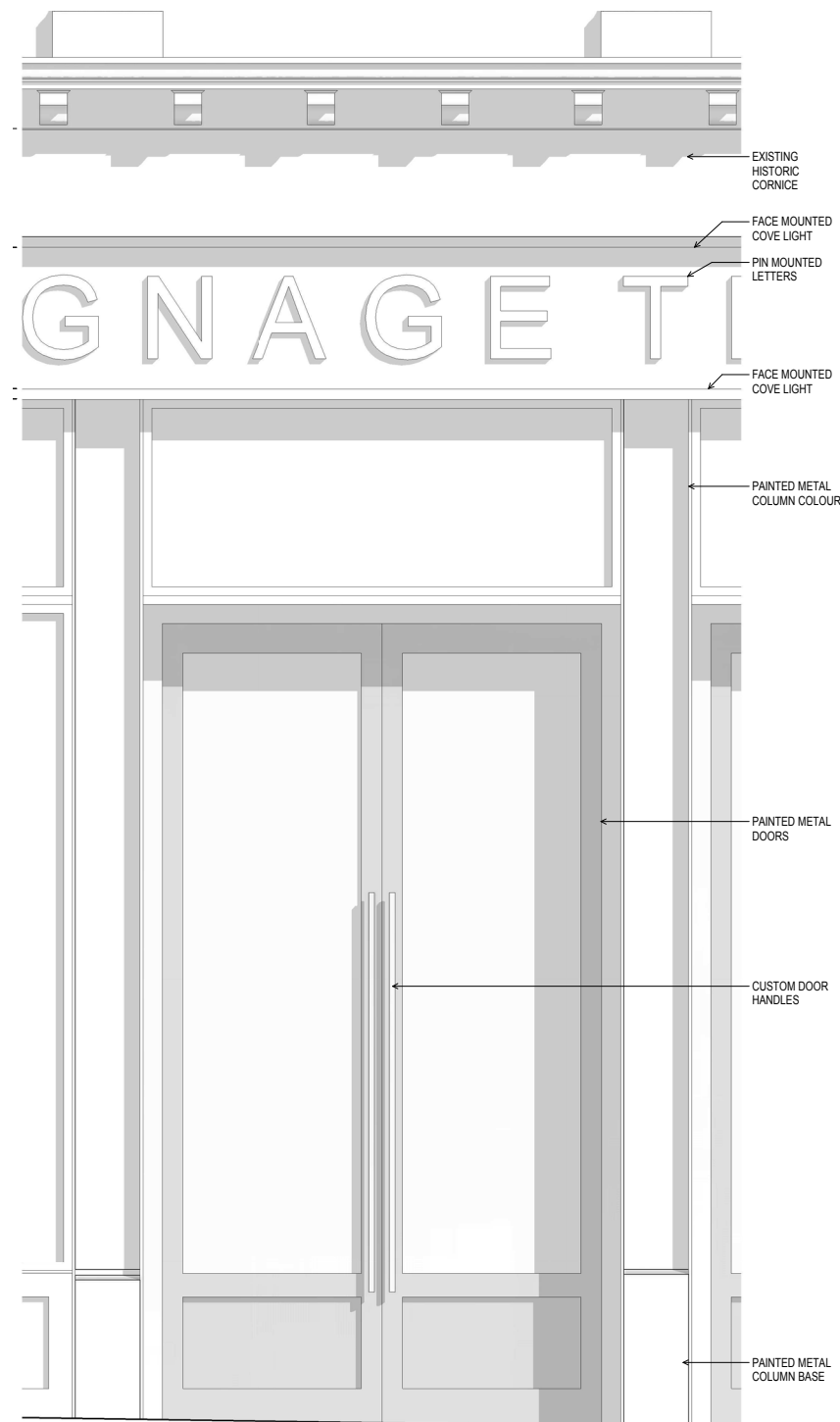
TNEMEC 32GR - LIGHT GREY



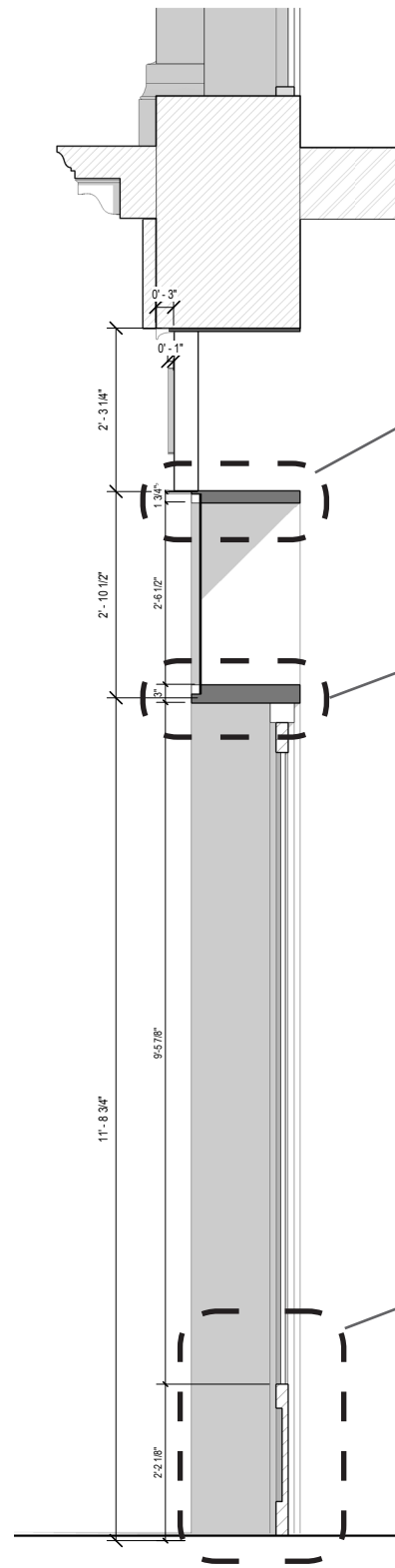
PT - 2: NEW AND HISTORIC COLUMN BASES

BENJAMIN MOORE HC-168 OR SIMILAR

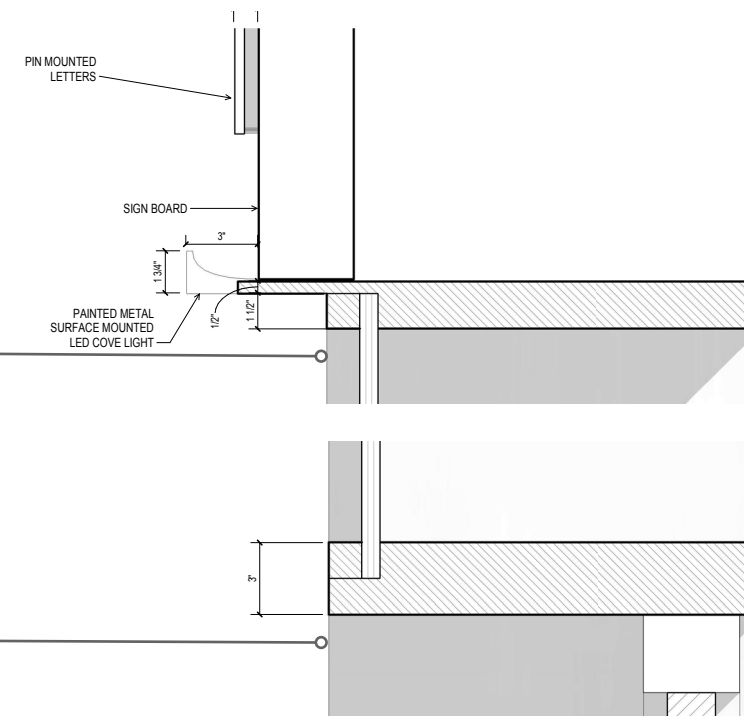




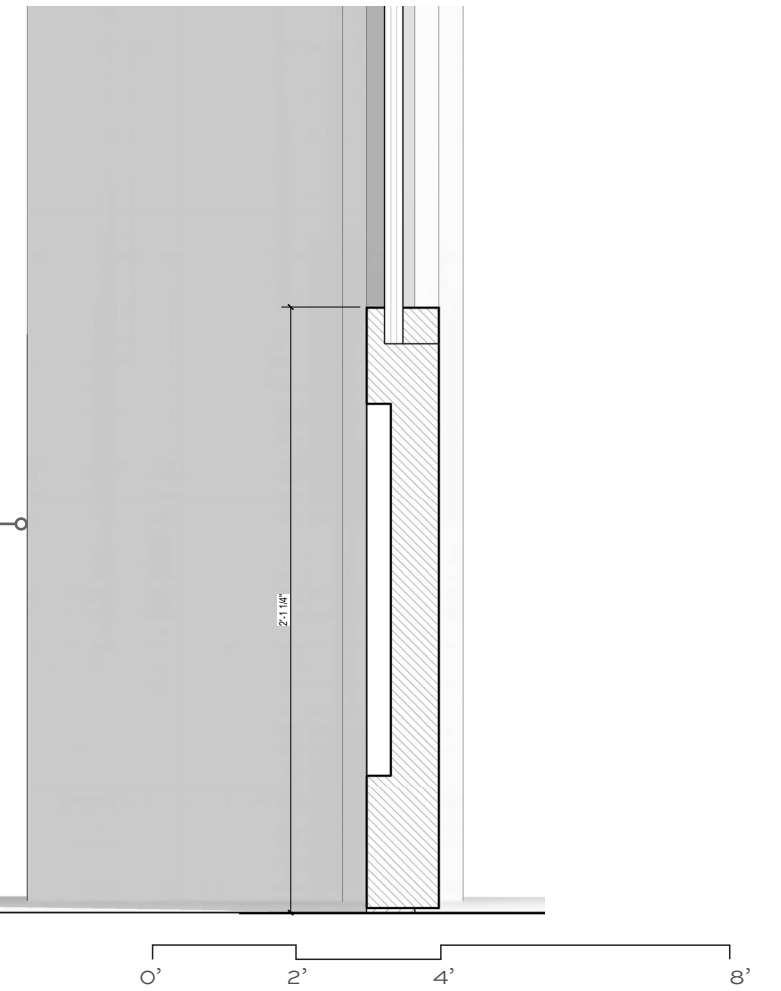
DETAIL PLAN/ELEVATION
@ 3/8" = 1'-0"



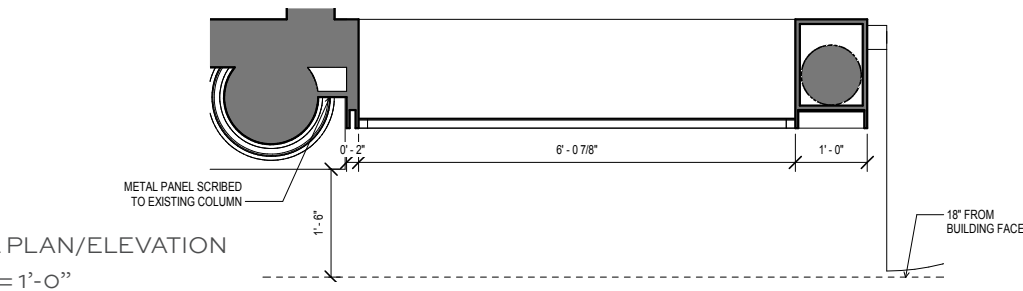
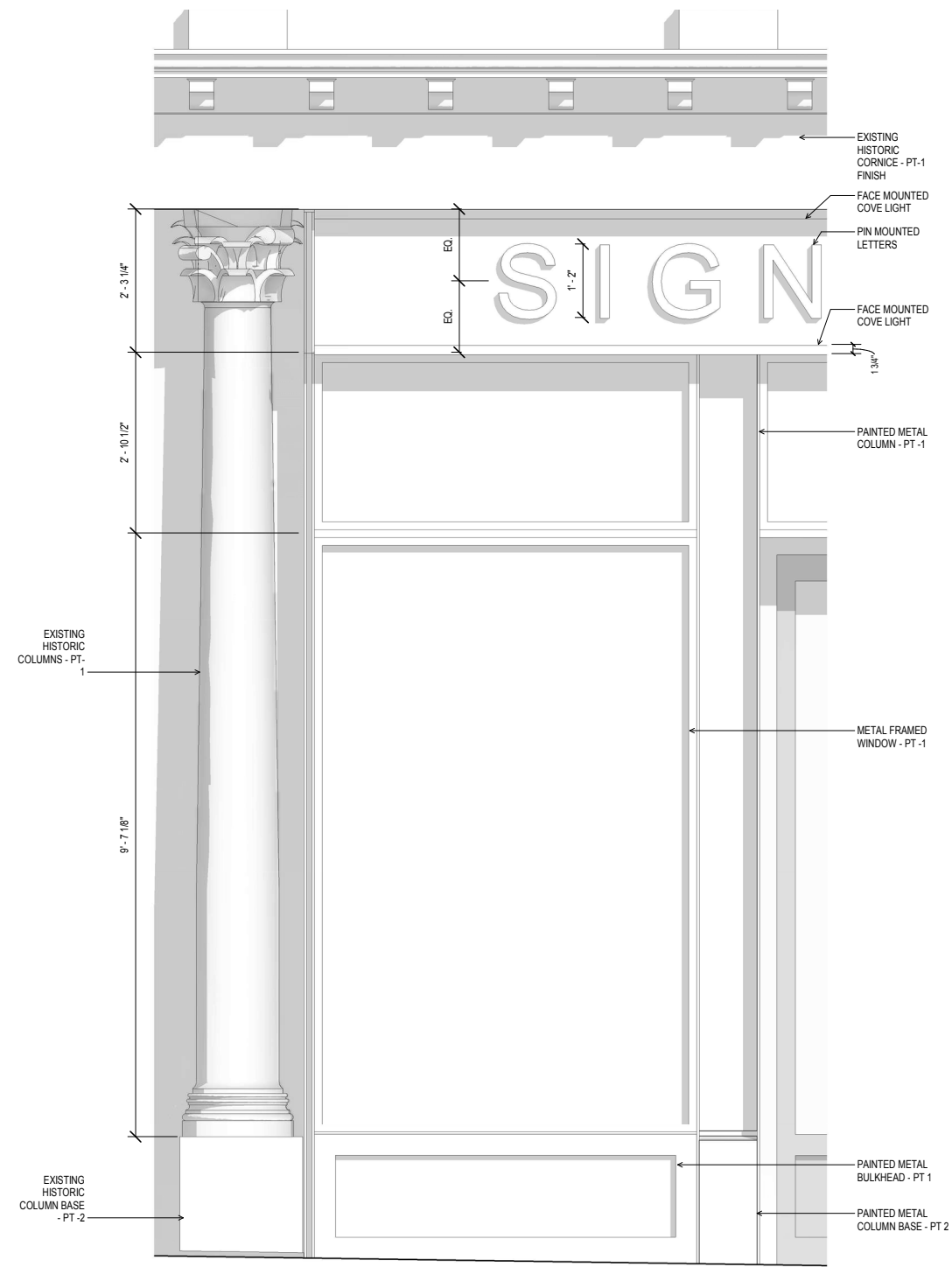
DETAIL SECTION @ 3/8" = 1'-0"



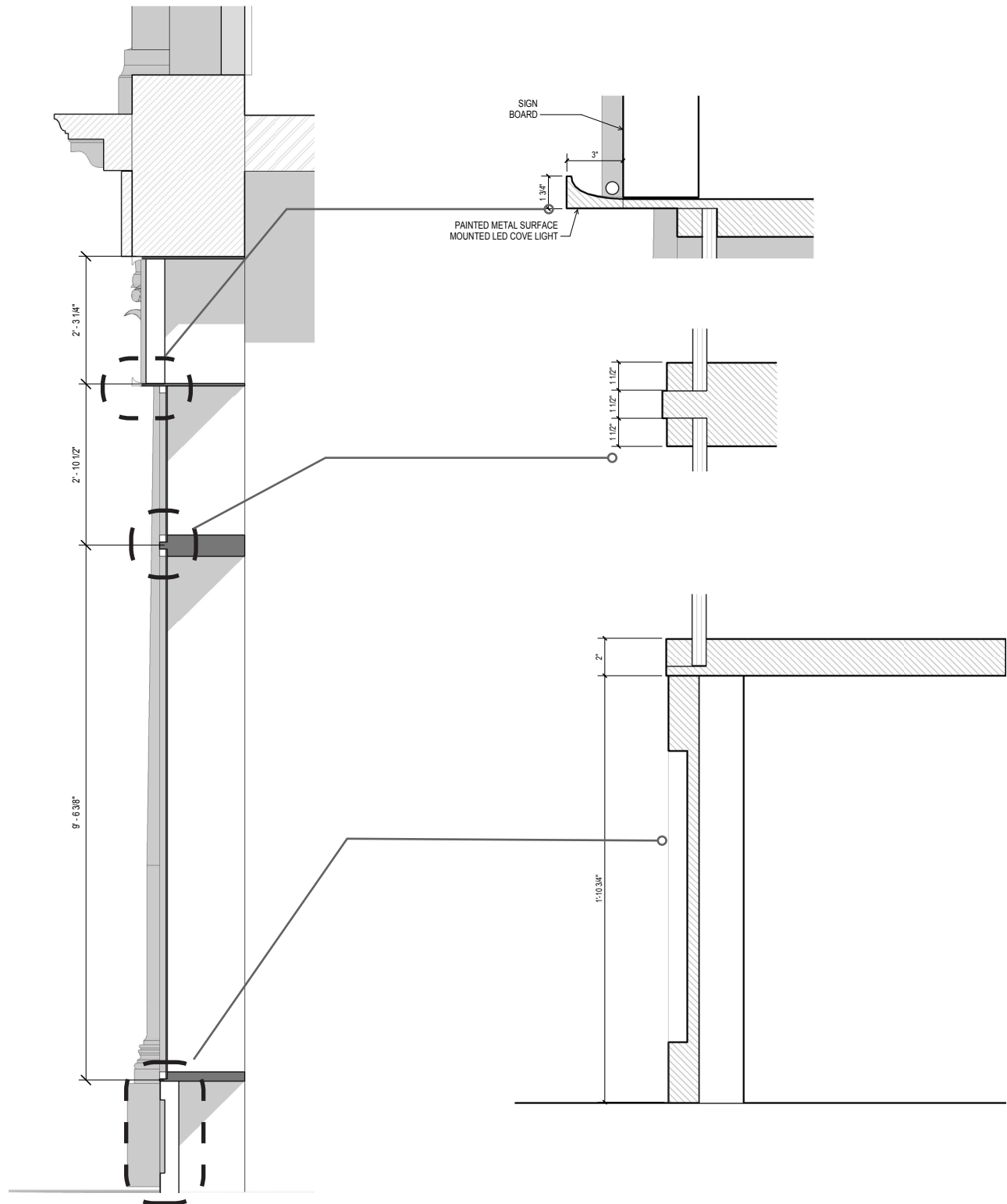
DETAIL PLAN @ 3/4" = 1'-0"



DETAIL VIEWS
424 BROADWAY STOREFRONT

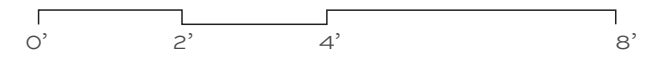


DETAIL PLAN/ELEVATION @ 3/8" = 1'-0"



DETAIL SECTION @ 3/8" = 1'-0"

DETAIL PLAN @ 3/8" = 1'-0"



DETAIL VIEWS
424 BROADWAY STOREFRONT





EXISTING STOREFRONT

EXISTING STOREFRONT

424 BROADWAY STOREFRONT

BKSK



RENDER OF PROPOSED STOREFRONT WITH CURRENT OWNERSHIP PORTION COMPLETED

PROPOSED STOREFRONT - PHASE 1

424 BROADWAY STOREFRONT



RENDER OF PROPOSED COMPLETED STOREFRONT MASTER-PLAN

PROPOSED STOREFRONT MASTER-PLAN

424 BROADWAY STOREFRONT